

# Mémorial Boujemâ Kariouch

## Mats aidés en 2 coups

### Juge : Christer Jonsson

### 10 Avril 2012

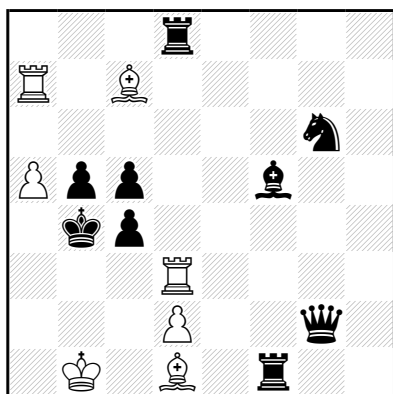
Participants :

Ashot UZUNYAN (1) , Jean CARF (2) , Zoltán LABAI (3,4) , Abdelaziz ONKOUD (5,13 ,14 , 15,16,18), Vladislav BUNKA (6) , Shaul SHAMIR (7\*) , Paz EINAT (7\*) , Dieter MULLER (8\*,9\*,10\*,11\*) , Franz PACHL (8\*,9\*,10\*) , Michal DRAGOUN (11\*) , Antanas VILKAUSKAS (12\*) , Zlatko MIHAJLOSKI (17) , Vitaly MEDINTSEV (19) , Alexandre PANKRATIEV (20) Valery BARSUKOV (21) , Luis Miguel MARTIN (22).

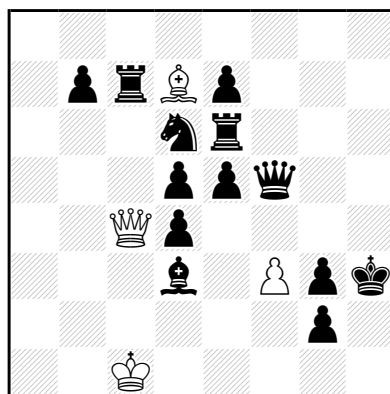
Michal DRAGOUN  
Dieter MULLER  
MT Boujemâ Kariouch  
Maroc Echecs 2012  
1° Prix

Luis Miguel MARTIN  
MT Boujemâ Kariouch  
Maroc Echecs 2012  
2° Prix

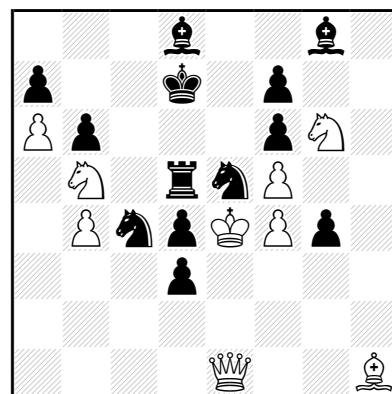
Vitaly MEDINTSEV  
MT Boujemâ Kariouch  
Maroc Echecs 2012  
1° Mention d'Honneur



$h\neq 2$  2 solutions 7+9



$h\neq 2$  2 solutions 4+13



$h\neq 2$  2 solutions 9+13

1 Prize Nr 11 Kb1-Kb4 Analogous play, orthogonalt and diagonalt, sacrifices of unpinned white pieces and nice mates. I like it!

1.Fd7 (1.F~?) Td4 2.ç×d4 Fd6‡  
1.Tf3 (1.T~?) Fa4 2.b×a4 Tb7‡

2 Prize Nr 22 Kc1-Kh3 Surprisingly first black moves and then line opening and unpins on the same square.

1.Th6 Dç6 2.Cç4 D×h6‡  
1.Dh7 Dç2 2.Fç4 D×h7‡

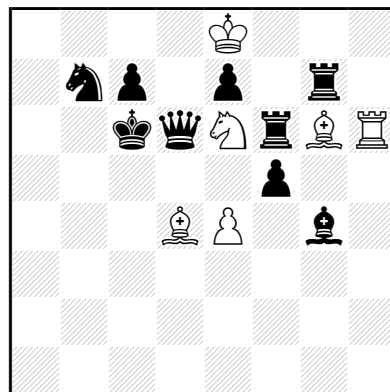
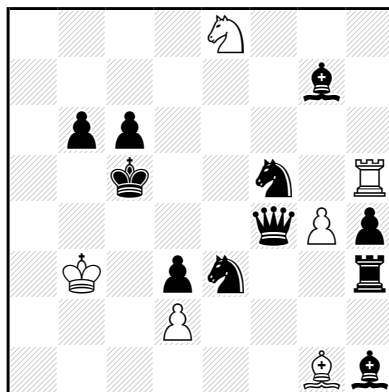
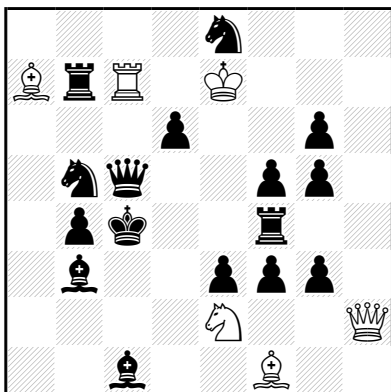
1 HM Nr 19 Ke4-Kd7 Beautifuls models with functionswechsel between Qd1-Bh1 and Rd5-Ke5.

1.T×b5 (1.Tç5?, 1.Td6?) R×d4 2.Ré8 Fç6‡  
1.C×g6 (1.Cç6 ?, Cf3?) R×d3 2.Rç6 Dé8‡

Abdelaziz ONKOUD  
 MT Boujemâ Kariouch  
 Maroc Echecs 2012  
 2° Mention d'Honneur

Valery BARSUKOV  
 MT Boujemâ Kariouch  
 Maroc Echecs 2012  
 1° Recommandé

Abdelaziz ONKOUD  
 MT Boujemâ Kariouch "  
 Le Chameau"  
 Maroc Echecs 2012  
 2° Recommandé



h‡2 2 solutions 6+16

h‡2 b) ♠b6→b5 6+11

h‡2 2 solutions 6+9

2 HM Nr 14 Ke7-Kc4 Blacks first move is to allow white mate in second. Queen c5 pins in both solutions. Models but some heavy position.

1.Cé×ç7 Cç3+ 2.Rd4 Dh8‡  
 1.T×a7 Cd4+ 2.Rç3 C×b5‡

1 Com Nr 21 Kb3-Kc5 Black Quenn unpins own Knight, which later close own lines. Nice idea, but pity that in A 1Qd4 also blocks which not happen in B.

a)1.Dd4 (1.Df2 ?) g×f5 2.Cg2 f6‡  
 b)1.Dé5 (1.Dg5?) d×é3 2.Cg3 é4‡

2 Com Nr 18 Ke8-Kc6 Pin models in a attractive Position.

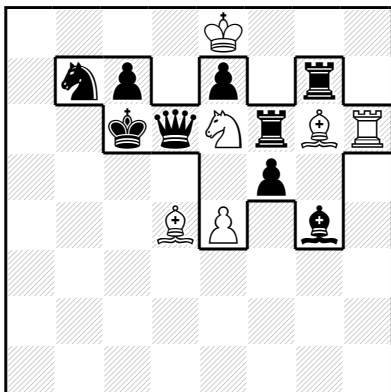
1.T×é6 Rf8 2.Té5 Fé8‡  
 1.Tf×g6 Fa7 2.Tg5 Cd4‡  
 Arrêtez-le chameau !

Le roi blanc est assis sur le dos d'un chameau. Le roi noir symbolise le chameau.

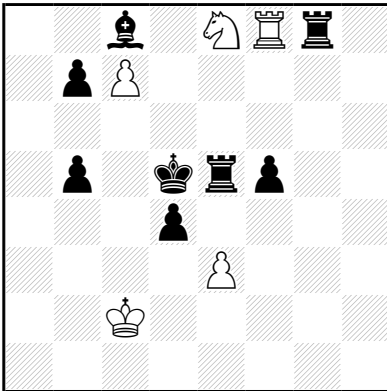
Les pièces blanches et noires coopèrent afin d'arrêter le chameau. La Tour noire opère des croche-pieds pour stopper le chameau (captures du couple Fg6/Cé6 et contre-mesures Tg5 et Té5 ).

Le Fd4 s'accroche à la tête du chameau (1...Fa7) , le Cé6 arrête le chameau (2...Cd4#).

Le Roi blanc recule en tirant sur la corde (1...Rf8) , le Fg6 arrête le chameau (2...Fé8#).



Dieter MULLER  
 Franz PACHL  
 MT Boujemâ Kariouch  
 Maroc Echecs 2012  
 3° Recommandé



h†2      b)-♘e8      5+8

3 Com Nr 9 Kc2-Kd5 Nice K-star with good economi

a)1.Fd7 ♘8=C 2.Ré6 Cç7†

1.T×é3 T×f5+ 2.Ré4 Cd6†

b)1.Rç4 Td8 2.Tç5 T×d4†

1.Rç6 T×ç8 2.Td8 ç×d8=D†